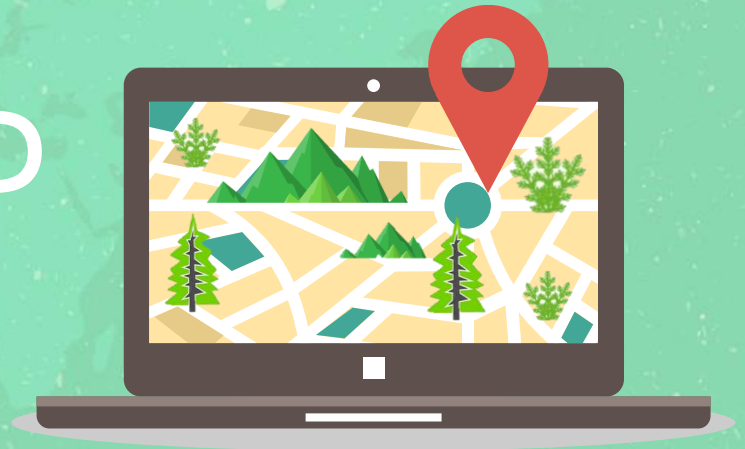


MAUI ECONOMIC DEVELOPMENT BOARD  
WOMEN IN TECHNOLOGY PROJECT PRESENTS

Exploring the  
**WATERSHED**  
through  
**STEM**



Thursday, December 8, 2016

**MAUI COUNTY K-12 TEACHER WORKSHOP**

**COME LEARN**

our new MEDB STEMworks™ curriculum, focusing on native Hawaiian species, watersheds, invasive species and how local managers protect our special places. Learning modules include videos, GIS exercises, and more. Get trained on how to use the curriculum and the GIS exercises. Sub-stipends available.

- Connect traditional Native Hawaiian knowledge with modern scientific methods
- Access valuable classroom support for your program implementation
- Set up guided experiential watershed fieldtrips for your students (including transportation)

**FACILITATOR**

Sarah McLane Bryan

is a GIS Analyst, Remote Sensing technician, conservationist, and project manager.

**FREE REGISTRATION**

Register via online at  
<https://watershedteacher.eventbrite.com>

Maui Research & Technology Center  
590 Lipoa Pkwy, Room #159  
Kihei, Maui

9 am – 2:30 pm  
Lunch provided

Registration deadline: Dec. 1  
Technical Requirements: Bring Laptops

Questions? Contact:  
Isla Young at [isla@medb.org](mailto:isla@medb.org)  
808.875.2307

Funded by:



maui economic  
DEVELOPMENT BOARD

